

Spørgsmål "Håndskedeller" / Skovskole

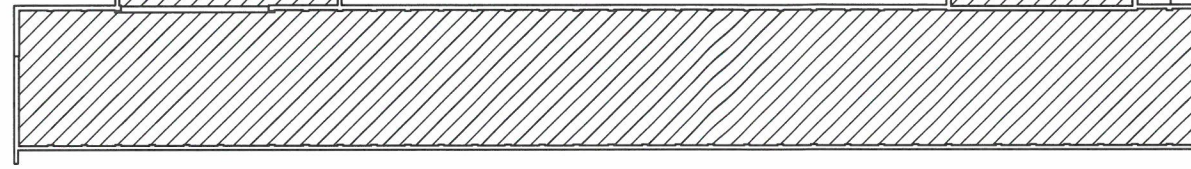


Fig 3

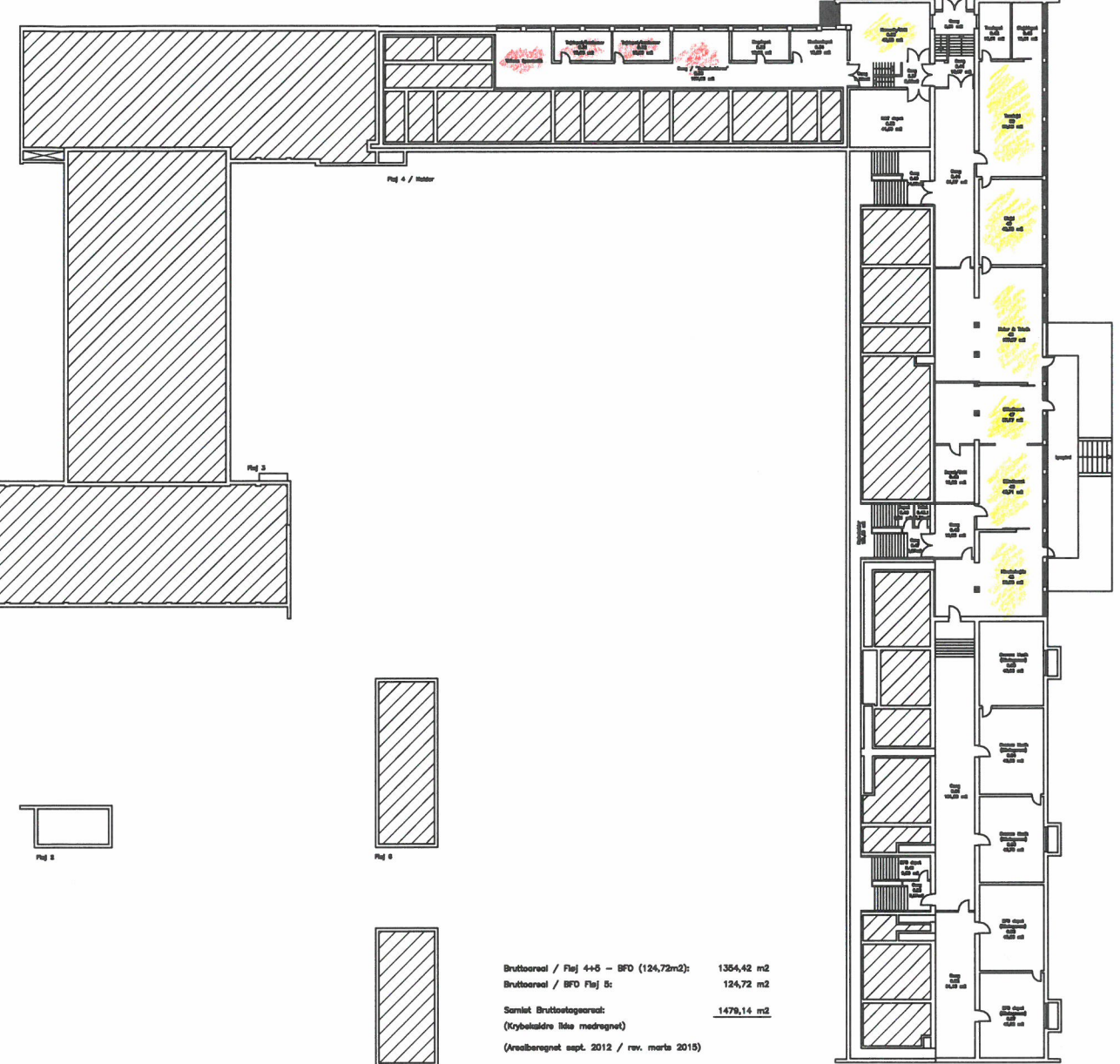
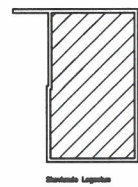


Fig 4 / Høder

Fig 4 / Høder



Støbtude Legestein



Fig 2

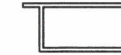


Fig 3

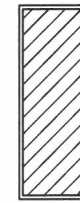


Fig 5

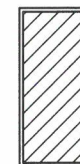



Fig 6

Bruttoareal / Fløj 4+5 - BFD (124,72m²): 1304,42 m²
 Bruttoareal / BFD Fløj 5: 124,72 m²
 Samlet Bruttoareal: 1479,14 m²
 (Krykkeldere ikke medregnet)
 (Arealberegnet sept. 2012 / rev. marts 2015)

 BALLERUP KOMMUNE Ejendomme 44 77 20 00 RÅDHUSET, 2750 BALLERUP			SAG / PROJEKT / EMNE		REVISION		
			SKOVLUNDE SKOLE – NORD Lundebjerg 72, 2740 Skovlunde		DATO	SIGN.	
TEGN.NR.			MÅL	SIGN.			
(99)1.15			1:600	1 tih			
MATR.NR.			DATO	2			
11ab Skovl.			08.03.06	3			
Oversigtstegning / Alle fløje Fundaments- og kælderplan					13.10.14		Tinna
					24.04.15		Iben