

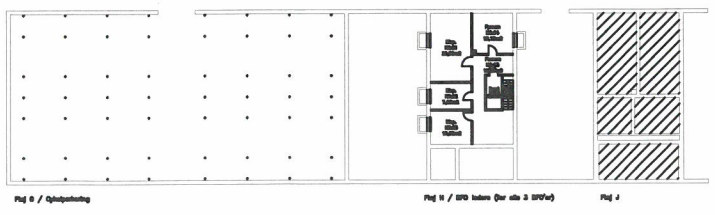

 = FAGLOKALER
 = BFO
 = ANDEN UNDERVINGSBRUG

FLJM M / Skole + Pædagogcenter - bygningen - BFO
 (8340,14-336,42-405,00)= 5557,74 m2
 FLJM M / BFO i "Fritids 3" (86,08+82,88+304,01)= 485,88 m2
 FLJM H / BFO Ledelse 92,83 m2
 Bruttoarealer / Ialt 7267,80 m2
 (Organisations i fløj A til F + K og N BODE medregnet i bruttoarealerne)
 (Arealberegnet juni 2012 / rev. juni 2016)



 BALLERUP KOMMUNE Ejendomme 44 77 20 00 RÅDHUSET, 2750 BALLERUP	SAG / PROJEKT / EMNE		REVISION	
	SKOVLUNDE SKOLE – SYD Ejbyvej 47–55, 2740 Skovlunde		DATE	SIGN.
TEGN.NR.	MÅL	SIGN.		
(99)1.15	1:650	1 tih		01.06.12 Tinna
MATR.NR.	DATE	2		30.06.16 Tinna
9hø, Skovl.	28.10.10	3		
		Oversigtstegning		
		Kølderplan		